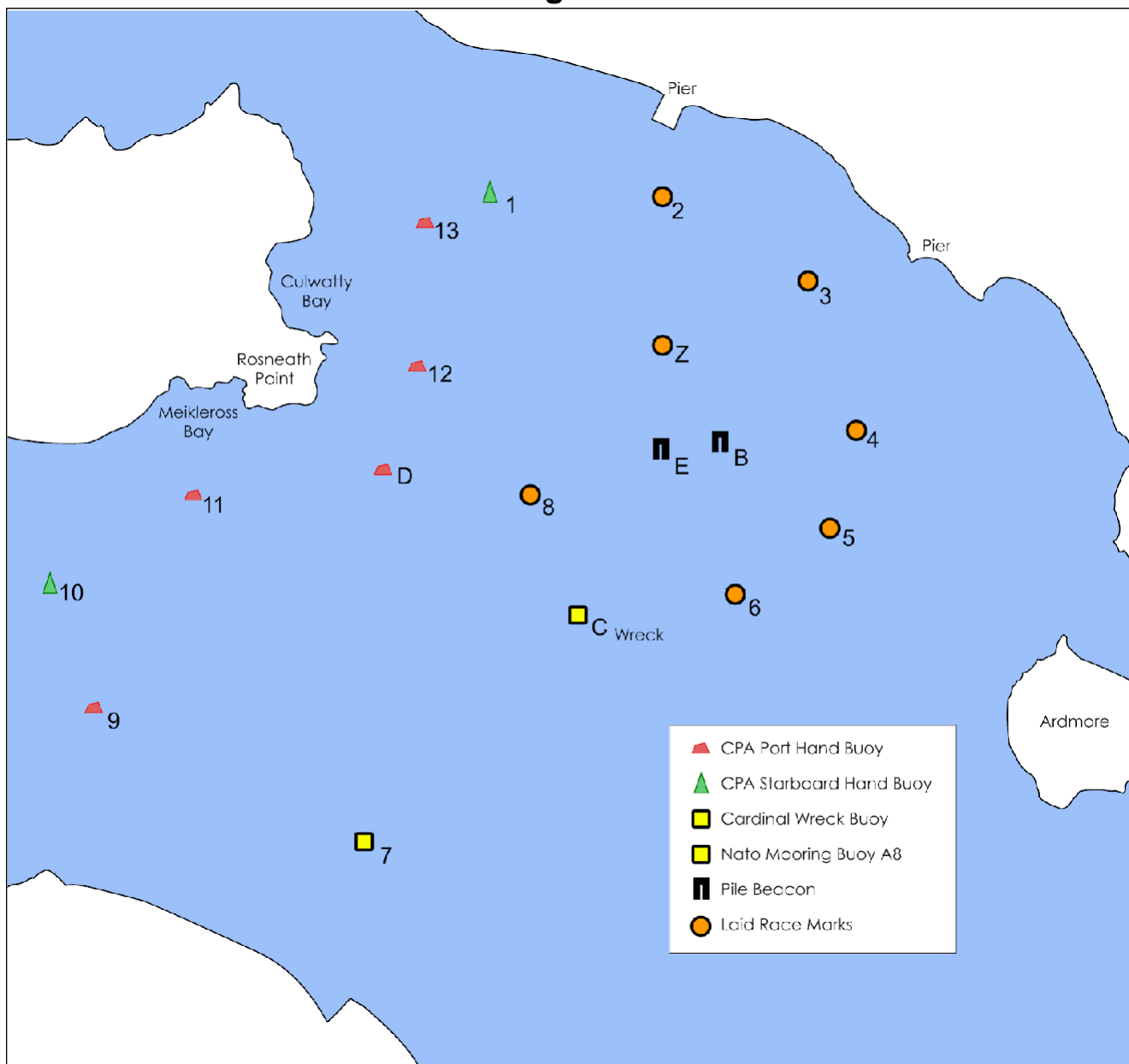


# Appendix B 2025

## East Patch Racing Area Course Chart



### Marks and Description

- |  |  |
|--|--|
| <ul style="list-style-type: none"> <li>1. Nav. Buoy "ROW" Green</li> <li>2. Laid Mark, Yellow / Black</li> <li>3. Laid Mark, Yellow / Black</li> <li>4. Laid Mark, Yellow / Black</li> <li>5. Laid Mark, Yellow / Black</li> <li>6. Laid Mark, Yellow / Black</li> <li>7. NATO Buoy "A8", Large Yellow</li> <li>8. Laid Mark, Yellow / Black</li> <li>9. Nav. Buoy "No. 27" Red</li> </ul> | <ul style="list-style-type: none"> <li>10. Nav. Buoy "ARD 5" Green</li> <li>11. Nav. Buoy "ARD 8" Red</li> <li>12. Nav. Buoy "No. 24" Red</li> <li>13. Nav. Buoy "No. 2" Red</li> <li>Z. Laid Orange sectors Start / Finish line</li> <li>B. Pile Beacon, Yellow (East)</li> <li>C. Wreck Cardinal Buoy, Yellow / Black / Y</li> <li>D. Nav. Buoy "ARD 10" Red</li> <li>E. Pile Beacon, Yellow (West)</li> </ul> |
|--|--|

NB

**(a) All rounding marks left to port.**

(b) When it is not a mark of the course, Nav. Buoy No. 24 Red (12) must be left on the proper hand

(c) Laid marks 2-6 inclusive and mark 8 are black/yellow marks unlike any other in the area.

## Appendix C - East Patch Courses 2025

If board B is displayed, H/C class 1 will sail Course B

Course No.	Wind Direction	Course A	Approx Dist.	Course B	Approx Dist.	Course C White Sail	Approx Dist.
1	315 deg	S, 1, 5, Z	3.0m	S, 1, 5, Z	3.0m	S, 1, 8, B, Z	2.6m
		1, 5, Z	3.0m	1, B, Z	2.0m	1, 8, B, Z	2.6m
		1, 5, Z	3.0m	1, B, Z	2.0m		
2	350 deg	S, 2, 6, Z	2.4m	S, 2, 12, 4, Z	2.4m	S, 2, 12, 4, Z	3.4m
		2, 6, Z	2.4m	2, 12, E, Z	1.4m	2, 12, E, Z	2.4m
		2, 6, Z	2.4m	2, B, Z	1.4m		
3	15 deg	S, 2, 7, Z	4.0m	S, 2, C, Z	2.4m	S, 2, 12, C, Z	3.2m
		2, C, Z	2.4m	2, E, Z	1.4m	2, 12, 8, E, Z	2.2m
		2, C, Z	2.4m	2, E, Z	1.4m		
4	55 deg	S, 3, 9, Z	5.2m	S, 3, 8, Z	2.2m	S, 3, 12, 8, Z	3.0m
		3, 8, Z	2.2m	3, 8, Z	2.2m	3, 2, 8, Z	2.6m
		3, 8, Z	2.2m	3, 8, Z	2.2m		
5	70 deg	S, 3, 10, Z	5.0m	S, 3, D, Z	2.8m	S, 3, 1, D, Z	3.3m
		3, D, Z	2.8m	3, D, Z	2.8m	3, 1, D, Z	2.2m
		3, D, Z	2.8m	3, D, Z	2.8m		
6	75 deg	S, 3, 11, Z	4.0m	S, 3, D, Z	2.8m	S, 3, 1, 8, Z	3.0m
		3, D, Z	2.8m	3, D, Z	2.8m	3, 2, E, Z	2.1m
		3, D, Z	2.8m	3, D, Z	2.8m		
7	85 deg	S, 4, D, Z	3.2m	S, 4, D, Z	3.2m	S, 4, 2, D, Z	3.2m
		4, D, Z	3.2m	4, D, Z	3.2m	4, 2, 12, Z	3.2m
		4, D, Z	3.2m	4, D, Z	3.2m		
8	95 deg	S, 4, 12, Z	2.8m	S, 4, 12, Z	2.8m	S 4, 2, 12, Z	3.2m
		4, 12, Z	2.8m	4, 12, Z	2.8m	4, 2, 12, Z	3.2m
		4, 12, Z	2.8m	4, 12, Z	2.8m		
9	130 deg	S, 5, 1, Z	3.0m	S, 5, 1, Z	3.0m	S, 5, 3, 1, Z	3.3m
		5, 1, Z	3.0m	B,1, Z	2.0m	5, 2, Z	2.3m
		5, 1, Z	3.0m	B, 1, Z	2.0m		
10	170 deg	S, 6, 2, Z	2.4m	S, 6, 2, Z	2.4m	S, 6, 4, 2, Z	3.0m
		6, 2, Z	2.4m	E, 2, Z	1.4m	6, 4, 2, Z	2.8m
		6, 2, Z	2.4m	E, 2, Z	1.4m		
11	195 deg	S, 7, 2, Z	4.0m	S, C, 2, Z	2.5m	S, C, 4, 2, Z	3.2m
		C, 2, Z	2.5m	C, 2, Z	2.5m	E, 4, 2, Z	2.2m
		C, 2, Z	2.5m	E, 2, Z	1.4m		
12	195 deg	S, 7, 5, 2, Z	4.7m	S, C, 2, Z	2.5m	S, C, 4, 2, Z	2.6m
		7, 2, Z	4.0m	C, 2, Z	2.5m	C, 4, 2, Z	2.0m
		7, 2, Z	4.0m	E, 2, Z	1.4m		
13	240 deg	S, 9, 3, Z	5.0m	S, 8, 3, Z	2.0m	S, 8, B, 3, Z	3.1m
		8, 3, Z	2.0m	8, 3, Z	2.0m	8, B, 3, Z	2.0m
		8, 3, Z	2.0m	8, 3, Z	2.0m		
14	250 deg	S, 10, 7, 3, Z	6.0m	S, D, 3, Z	2.8m	S, D, 6, 3, Z	3.5m
		D, 3, Z	2.8m	D, 3, Z	2.8m	D, B, 3, Z	2.0m
		D, 3, Z	2.8m	D, 3, Z	2.8m		
15	265 deg	S, 11, 4, Z	4.2m	S, D, 4, Z	3.2m	S, D, C, 4, Z	3.2m
		D, 4, Z	3.2m	D, 4, Z	3.2m	12, 8, 4, Z	3.0m
		D, 4, Z	3.2m	D, 4, Z	3.2m		
16	280 deg	S, 12, 4, Z	2.8m	S, 12, 4, Z	2.8m	S, 12, 8, 4, Z	3.0m
		12, 4, Z	2.8m	12, 4, Z	2.8m	12, 8, B, Z	2.3m
		12, 4, Z	2.8m	12, 4, Z	2.8m		